



nVision Introduction

Thank you for choosing the nVision Reference Pressure Recorder from Crystal Engineering Corporation. Your nVision is a combination of leading edge technology and rugged industrial design. nVision, coupled with CrystalControl Software, allows you to make nVision exactly what you need it to be.

CrystalControl Configuration Software

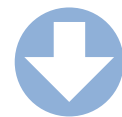
CrystalControl enables you to custom configure your nVision to tailor it suit your needs. With only a mini USB B cable and a computer running Microsoft Windows* the CrystalControl Configuration Software allows you to customize your nVision to suit your specific needs and applications.

Installation

CrystalControl is distributed as a self-extracting Setup application. Insert the enclosed CD and launch CrystalControlSetup.exe. Follow the on-screen prompts for installation.

Software is also available from the Crystal Engineering website: www.crystalengineering.net/downloads.

Microsoft Windows XP [SP3] or Windows Vista [SP1]. Microsoft, Windows, XP and Vista is either a registered trademark or trademark of Microsoft Corporation in the United States and/or other countries.



Connect or Disconnect your nVision (points to Disconnect button)

Chassis or Module Configuration Settings (points to Platform, nVision, Modules, Upper: RTD100, Lower: 3KPSI)

Customize Settings with the "Config" tab (points to Config tab)

Commit Changes with "Update Gauge" (points to Update Gauge... button)

32 Character Message Store (points to Message Store field)

Enable only the units you need (points to Available Units list)

The configuration screen shows the following details: Model: 3KPSI, Serial Number: 963552, Firmware Version: R090000, Calibrated On: 06/04/2009, Calibration Due: 06/04/2010, Zero Limit: 20.00000 PSI, Userspan: 1.00000, Water Density: 4°C (39.2°F). Available units include PSI, kg/cm², inHg, mmHg, mmH2O, kPa, bar, mbar, MPa, and User unit. The current reading is 1.00000 PSI.

View stored recorded data in "DataViewer" (points to DataViewer tab)

Download only checked runs (points to Recorded Runs list)

Hover cursor over graph to see date & time summary (Show Point Values)
 > Left-click & drag to zoom
 > Right-click for additional options:
 - Copy
 - Save Image As
 - Show Point Values
 - Un-zoom
 - Undo all Zoom/Pan
 - Set Scale to Default

Select data run for graphing (points to Graph button for Run 3)

Export and Save in .xls format (points to Export to .xls file button)

Reset graphing to default zoom view (points to Reset chart button)

The DataViewer screen shows a graph of Pressure (PSI) and Temperature (°C) over time. The graph is titled "Run 3 with 573 points". The Y-axis ranges from -500.0 to 2000.0 PSI and 25.90 to 28.30 °C. The X-axis ranges from 00:00 to 00:50. The graph shows a pressure spike and a temperature rise.



We hope your nVision meets your expectations, and we're interested in any comments or suggestions you may have. You can send us a note at sales@crystalengineering.net.

Many features in this and our other products are a direct result of your comments!

Copyright © 2009 Crystal Engineering Corporation
 708 Fiero Lane, Suite 9, San Luis Obispo, California 93401-8701

No part of this document may be reproduced or modified in any form or by any means, electronic or mechanical, without express written permission from Crystal Engineering Corporation.


Visit us on the web at www.crystalengineering.net

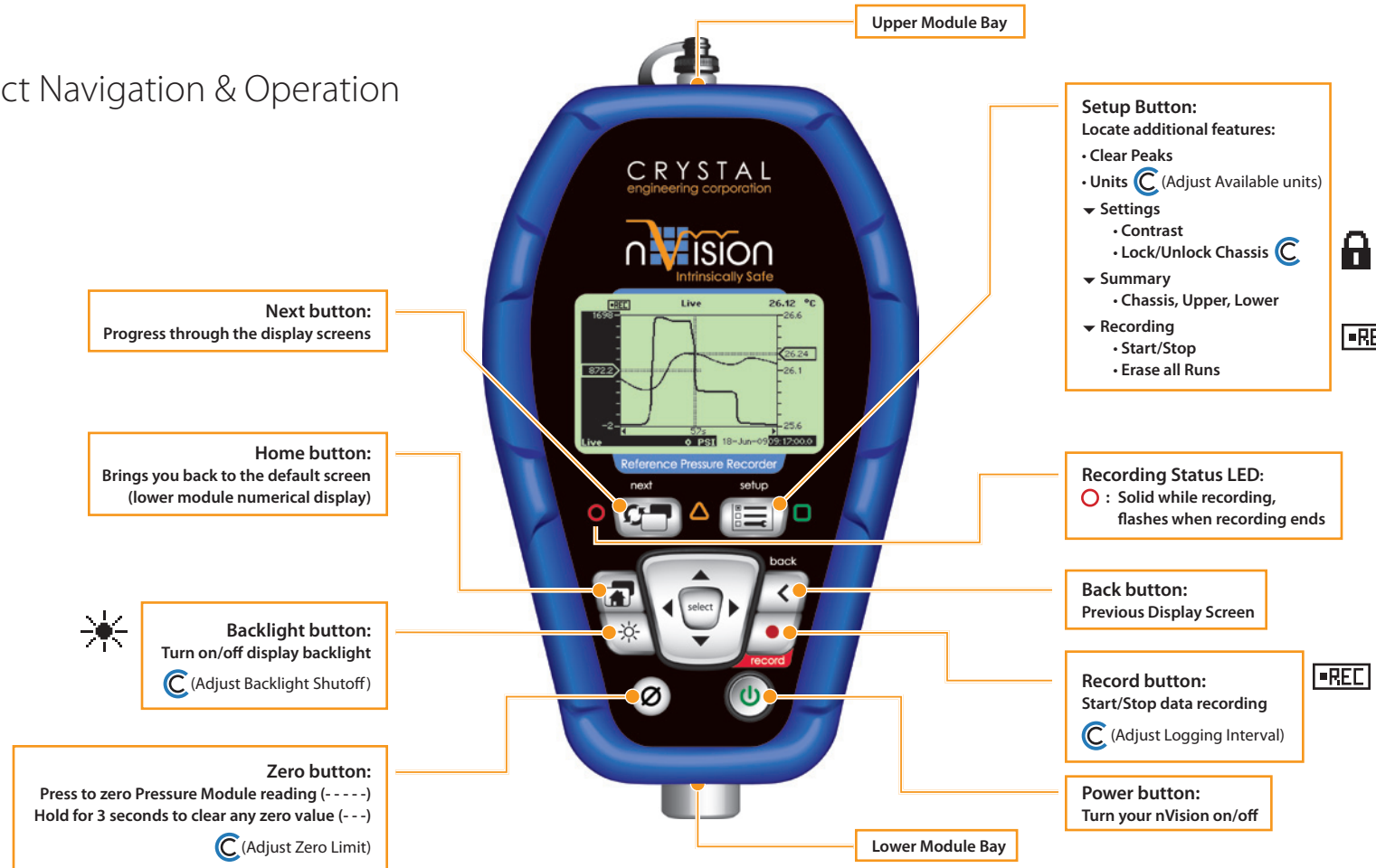
Button Functions

Depending on your particular configuration your nVision may physically look different than the model shown, and all descriptions are intended for general representation only. Some settings can be enabled and disabled using the **CrystalControl** software, and may not be visible on your model. For an in-depth look at all functionality and options for the nVision, please refer to the nVision Operation Manual located on your nVision CD (also available at www.crystalengineering.net/downloads).

Display Options

nVision has several screen options depending upon how the recorder is populated with modules. A summary of the available screen types is shown below. You may view the data in single or dual mode (upper and lower modules simultaneously). Additionally, you may view the data numerically or graphically to suit your needs.

 This icon represents a component that can be modified with **CrystalControl** software



Module Interfaces







Pressure Modules (PM)

Crystal Pressure Fittings (CPF)
System: Medium Pressure
Female (MPF) 1/4" medium pressure tube system with 7/16-20 threads

Temperature Module (RTD100)

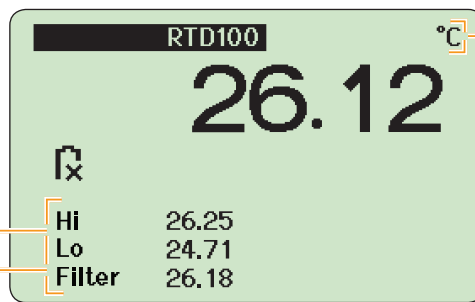
IP67 rated M8 connector (P/N: 3953) with terminal block for 2-, 3-, 4-wire support

Battery Icon Key

-  External (USB) Power
-  100% Power Remaining
-  75% Power Remaining
-  50% Power Remaining
-  25% Power Remaining
-  0% Power Remaining (Replace Batteries or Connect to USB Power)

nVision Numerical Display

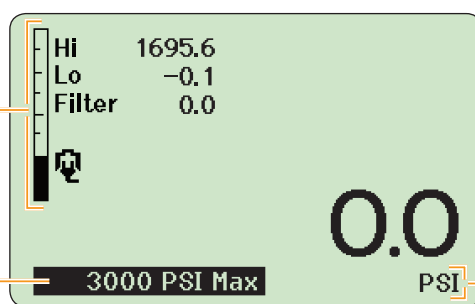
Numerical: Upper Module Screen



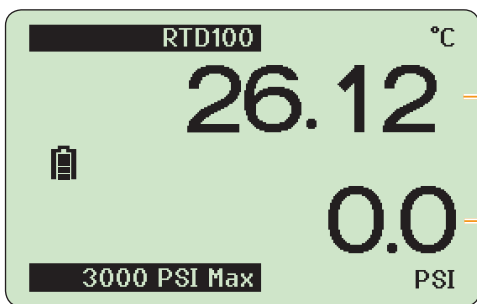
Sensor Reading biased towards applicable module (Upper Module reads higher on the screen, Lower Module reads lower on the screen)

Selectable Units (via Setup button) 

Numerical: Lower Module Screen (Default)




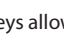
Numerical: Dual Module Screen (Both Sensors)




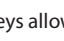
nVision Graphical Display

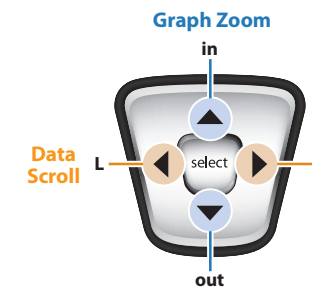
In the graphical modes the nVision navigad enables you to control how you view your data.

Data Scroll

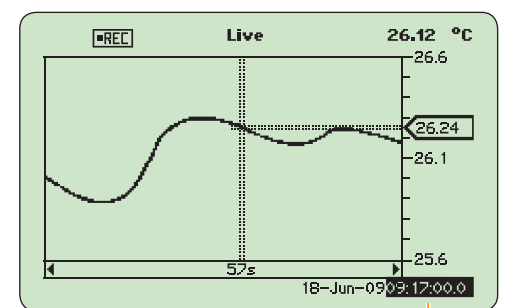
Using the  &  keys allows you to navigate to specific points along your run, while displaying reading and time information.

Graph Zoom

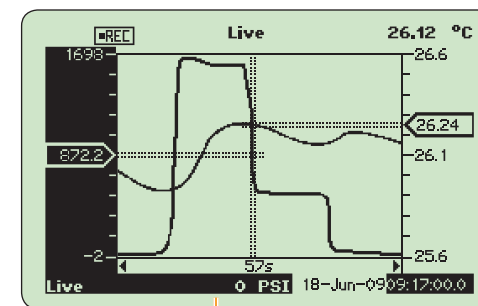
Using the  &  keys allows you to zoom in and out of your recorded run to suit your needs.



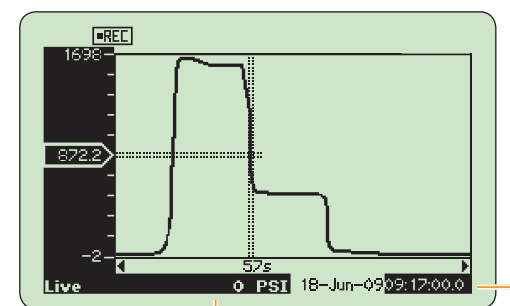
Graphical: Upper Module Screen



Graphical: Dual Module Screen (Both Sensors)



Graphical: Lower Module Screen



Test safely with live readings annunciated regardless of cursor location or zoom level