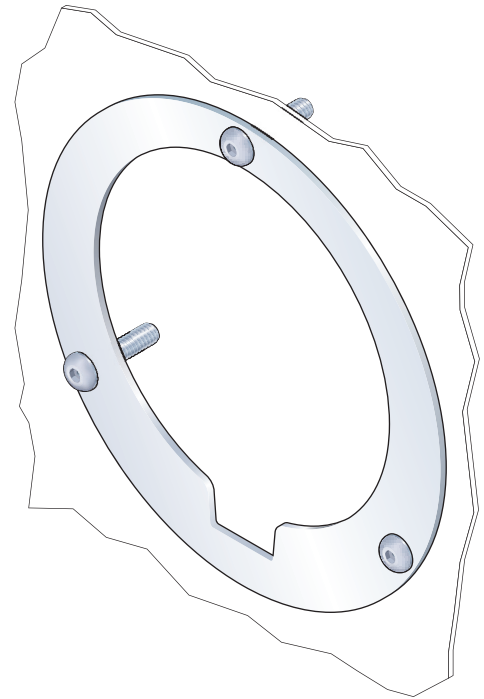
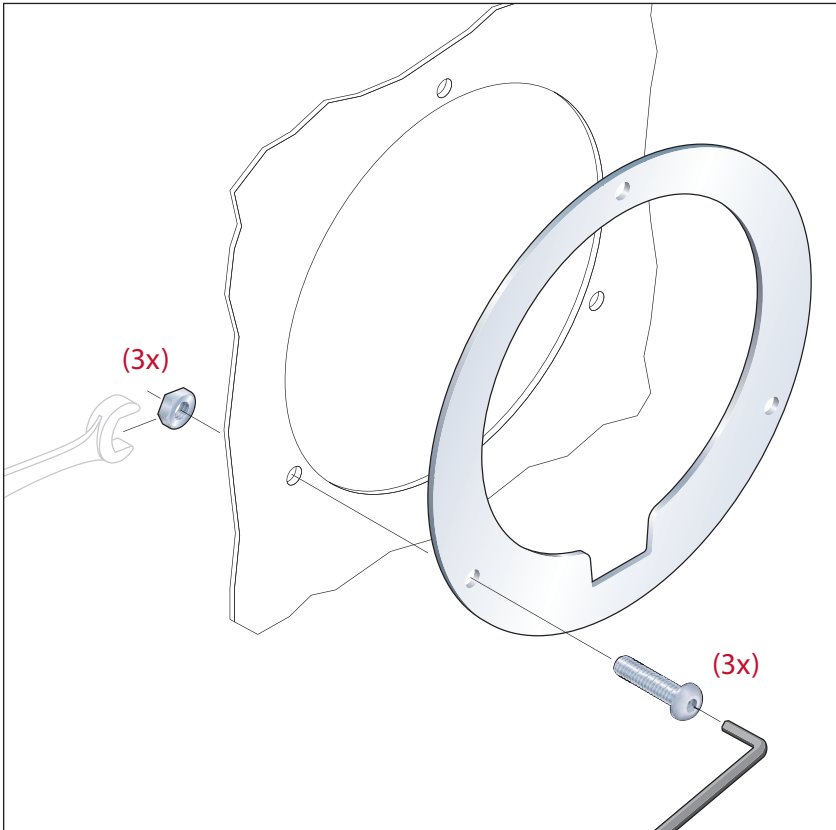
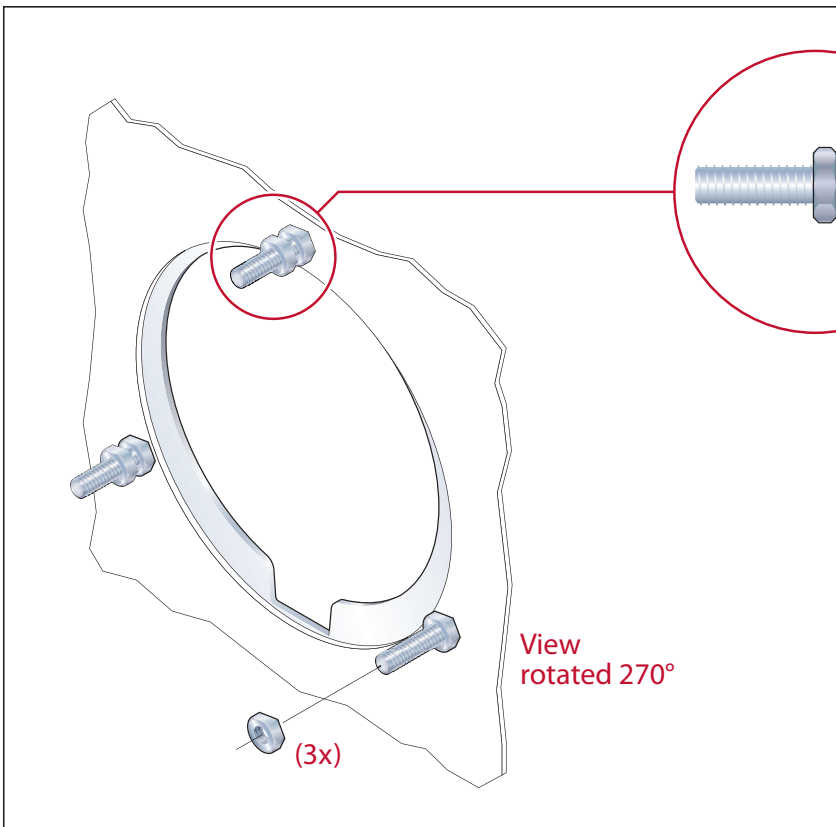


XP2i Flange Mounting Kit Assembly Instructions

The following instructions are provided for proper assembly and installation of the XP2i Flange Mounting kit. A cutout template and illustrated parts list are included on the last two pages.



- 1 Install the Front Flange using three (3) 10-32 x 7/8" Socket Pan Head Screws and three (3) 10-32 Nuts.
 - 2 Tighten using a 3/8" wrench and the provided Hex Key.
- * **Note:** If necessary, the 10-32 Nuts can be installed from the front, working through the cut-out hole.



Detail, showing the two (2) 10-32 Nuts mounted on the 10-32 x 7/8" Socket Pan Head Screw.

- 3 Install one (1) additional 10-32 Nut onto each screw. Hand-tighten only.

