

bourdon tube pressure gauges anti-vibration heavy duty version DS 4" (100mm)

MGS10



Instruments designed for use on power units, pumps, hydro-cleaning machines, presses, engine compressors, turbines, diesel engines, chemical, petrochemical and refrigerating plants and on machines and equipment where pulsating pressures or mechanical vibrations are apparent. They can be used with gaseous or liquid media which do not corrode copper alloy and which do not have high viscosity or do not cristalize.

Standard Model

Design: EN 837-1.

Safety designation: S1 as per EN 837-2.

Ranges: from 0...15 to 0...15000 PSI (from 0...1 to 0...1000 bar or other equivalent units).

Accuracy class: 1,0 as per EN 837-1.

Ambient temperature: -13...+149 °F (-25...+65 °C)

Process fluid temperature:

-13...+149 °F (-25...+65 °C) for ranges ≤ 580 psi (40 bar);

-13...+248 °F (-25...+120 °C) per campi ≥ 580 psi (40 bar).

Thermal drift: ±0,4 % / 10 K of range (starting from 68°F - 20°C).

Working pressure:

100% of FSV for static pressure;

90% of FSV for pulsating pressure;

Overpressure limit: 30% of FSV (max 12 h).

Protection degree: IP 55 as per IEC 529.

Socket material: copper alloy with internal restrictor Ø 0,8 mm.

Bourdon tube:

copper alloy for ranges ≤ 580 psi (40 bar);

AISI 316L st.st.for ranges > 580 psi (40 bar).

Case: stainless steel.

Ring: stainless steel, bayonet lock

Window: tempered glass

Movement: copper.

Dial: aluminium, white with black markings

Pointer: aluminium ,black

Fillable Model

Protection degree: IP 67 as per IEC 529.

Other features: as Standard Model.

Filled Model

Damping liquid: glycerine 98%, silicon oil or fluorinated fluid.

Ambient temperature:

+59...+149 °F (+15...+65 °C) with glycerine filling;

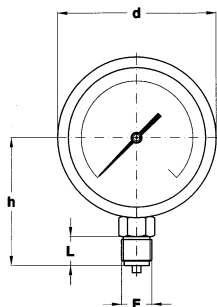
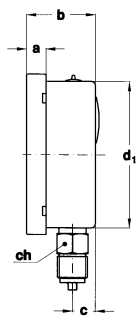
-49...+149 °F (-45...+65 °C) with silicon oil filling;

-76...+149 °F (-60...+65 °C) with fluorinated fluid filling.

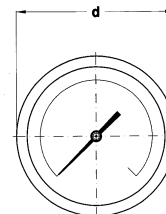
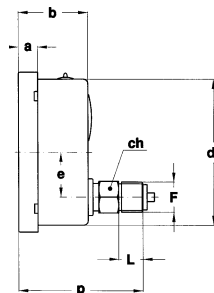
Process fluid temperature: max +149°F (+65 °C).

Protection degree: IP 67 as per IEC 529.

Other features: as Standard Model



**LOWER
CONNECTION MOUNTING**



**BACK
CONNECTION MOUNTING**

Mounting	F	a	b	c	d	d ₁	e	h	p	ch	L	Weight (1)
Lower	1/2-14 NPT - G 1/2 A	0.51" (13)	1.91" (48,6)	0.63" (16,1)	4.35" (110,6)	3.97" (101)		3.38" (86)		0.86" (22)	0.78" (20)	1.14 lbs (0,52 kg)
Back	1/2-14 NPT - G 1/2 A	0.51" (13)	1.91" (48,6)		4.35" (110,6)	3.97" (101)	1.22" (31)		3.41" (86,8)	0.86" (22)	0.78" (20)	1.25 lbs (0,57 kg)

dimensions : inches (mm)

(1) add 0.72 lbs (0,33 kg) when filled

VARIABLES

DESCRIPTION	standard	fillable	filled
"U"-clamp, for back connection pressure gauges	♦	♦	♦
Back flange, for lower connection pressure gauges	♦	♦	♦
Front flange, for back connection pressure gauges	♦	♦	♦
Maximum pointer IP 44 on plexiglas window (2)	♦		
Maximum pointer IP 65 on plexiglas window (2)		♦	♦
Reference pointer "MN7"	♦		
Suitable for filling with silicone		♦	
Silicone filling			♦
Fluorinated fluid filling			♦
Window glass	♦	♦	♦

(1) Accuracy refers to the area free from the maximum pointer action.

"HOW TO ORDER" SEQUENCE

Section / Model/Case /Mounting / Diameter / Special version / Range / Process connection / Variables

