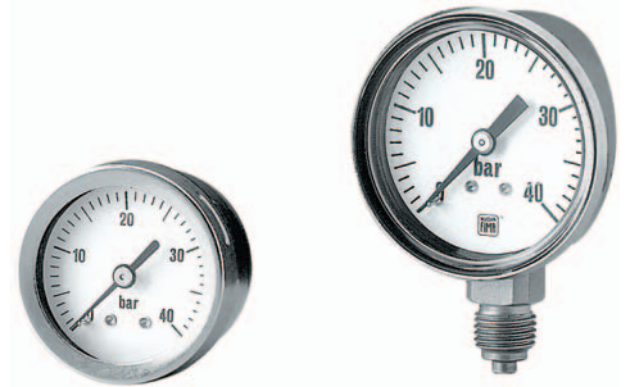


# bourdon tube pressure gauges all stainless steel construction DS 1.5", 2" (40-50 mm)

# MGS18



These instruments are designed for use in food, beverage, pharmaceutical, cryogenic, chemical and petrochemical processing industries, and in conventional and nuclear power plants, to measure gaseous or liquid media which do not have high viscosity or do not cristalize. They are built to resist the most severe operating conditions created by the ambient environment and the process medium. For use on power units, pumps, hydro-cleaning machines, presses, engine compressors, turbines, diesel engines, chemical, petrochemical and refrigerating plants and on machines and equipment where pulsating pressures or mechanical vibrations are apparent, the liquid-filled version is recommended.

## 01.18.1 - Standard Model, DS 1.5" (40mm)

**Design:** EN 837-1.

**Ranges:** from 0...30 to 0...600 psi (from 0...2.5 to 0...40 bar or equivalent units).

**Accuracy class:** 1.6 as per EN 837-1.

**Ambient temperature:** -13...+149 °F (-25...+65 °C).

**Process fluid temperature:** -22...+212 °F (-30...+100 °C).

**Thermal drift:** ±0,4 % / 10 K of range (starting from 68°F - 20°C).

**Working pressure:**

75% of FSV for static pressure;

66% of FSV for pulsating pressure;

100% of FSV for static pressure (max 12 hours).

**Over pressure limit (15 min max):**

25% of FSV.

**Protection degree:** IP 55 as per IEC 529, UNI 8896.

**Socket material:** AISI 316L st.st..

**Bourdon tube:** AISI 316L seamless tube.

**Case:** stainless steel.

**Ring:** stainless steel, bayonet lock.

**Window:** glass.

**Movement:** stainless steel.

**Dial:** aluminium, white with black markings.

**Pointer:** not adjustable, aluminium, black.

## 01.18.1 - Standard Model, DS 2" (50mm)

**Ambient temperature:** -13...+149 °F (-25...+65 °C).

**Protecti on degree:** IP 55 as per IEC 529.

**Case:** stainless steel, crimped.

**Ring:** stainless steel, crimped.

**Window:** plastic.

**Other features:** as Standard Model, DS 1.5" (40mm).

## 01.18.2 - Fillable Model, DS 2" (50mm)

**Protecti on degree:** IP 65 as per IEC 529.

**Other features:** as Standard Model, DS 2" (50mm).

## 01.18.3 - Filled Model, DS 2" (50mm)

**Damping liquid:** glycerine 98%.

**Ambient temperature:** +59...+149 °F (+15...+65 °C).

**Process fluid temperature:** max +149°F (+65 °C).

**Protecti on degree:** IP 65 as per IEC 529.

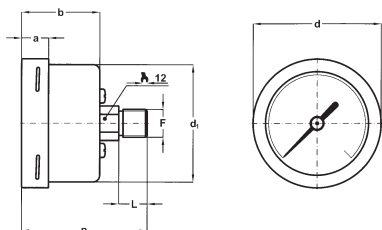
**Other features:** as Standard Model, DS 2" (50mm).

# bourdon tube pressure gauges

## all stainless steel construction, DS 1.5", 2" (40-50mm)

# MGS18

REV. 10/08

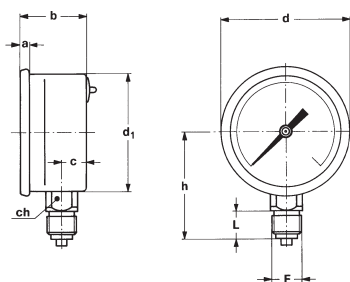


**DS 1.5" (40mm)**  
**D - BACK CONNECTION**

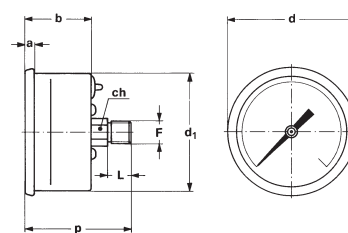
Mounting	DS	F	a	b	c	d	d <sub>1</sub>	h	p	L	ch	Weight (1)
Lower	<b>B</b> 2" (50)	<b>21M</b> - G 1/4 A	0.15"	1.14"	0.43"	2.20"	2.00"	1.94" - 1.87"		0.59" - 0.51"	0.55"	0.20 lbs
		<b>23M</b> - 1/4-18 NPT	(4)	(29)	(11)	(56)	(51)	(49,5 - 47,5)			(15-13)	(14)
Back	<b>A</b> 1.5" (40)	<b>11M</b> - G 1/8 A	0.37"	1.08"		1.77"	1.61"		1.73"	0.39"	0.47"	0.15 lbs
		<b>13M</b> - 1/8-27 NPT	(9,5)	(27,5)		(45)	(41)		(44)	(10)	(12)	(0,07 kg)
Back	<b>B</b> 2" (50)	<b>11M</b> - G 1/8 A	0.15"	1.14"		2.20"	2.00"		1.81"	0.39"	0.47"	0.17 lbs
		<b>13M</b> - 1/8-27 NPT	(4)	(29)		(56)	(51)		(46)	(10)	(12)	(0,078 kg)

dimensions : inches (mm)

(1) add 0.09 lbs (0,045 kg) when filled



**DS 2" (50mm)**  
**A - BACK CONNECTION**



**DS 2" (50mm)**  
**D - BACK CONNECTION**

## OPTIONS

Diameters	DS 1.5" (40mm)	DS 2" (50mm)
<b>B</b> - "Ring"-clamp, for back connection pressure gauges		♦
<b>E65</b> - IP 65 execution	♦	

## "HOW TO ORDER" SEQUENCE

Section / Model / Case / Mounting / Diameter / Range / Process connection / Options

1 18 1 A A 11M B  
2 D B 13M E65...T30  
3 21M  
23M